



## **PAOLO FRESU SOLO**

### **CONTRACTUAL RIDER**

#### **Equipments to be supplied by promoter**

##### **STAGE**

Min. 10m x 6m. In case of outdoor concerts, the roof is mandatory.

**SOUND / FOH** – Reference PRESENT sound engineer: Fabrizio Dall'Oca +39 (335) 6618404 - [masteraudio@virgilio.it](mailto:masteraudio@virgilio.it)

##### • **Room:**

Professional Audio System suitable for the location of the concert and the number of people in the hall. (preferred brands: Meyer, V.Dosh, Nexo, d&b, RCF)

24 channels house mixer digital console (Yamaha M7CL, DM 2000, CL1, CL3, CL5)

N° 5 monitors (D&B Max, Martin, RCF, L Acoustic)

24-channel stage mixer – 8 independent sends

Microphones: – see list.

##### • **Stage:**

4 monitors

**LIGHTING** - Reference PRESENT light engineer: Francesco Carta +39 377 4661895 ( [ian.atrac@gmail.com](mailto:ian.atrac@gmail.com) ) or Luca Devito +39 349 6159463 ( [infopaolofresu@gmail.com](mailto:infopaolofresu@gmail.com) )

11 pc 1000w

10 PROFILE 1000W (36°)

5 ETC 750W +support for gobo+ground support

3 PAR LED 80w LINEAR DIMMER 0-100% 16°

5 PAR 36 8°

15 DOMINO 1000w

2 LINES DIMMER (black cable)

1 FOLLOW SPOT

NO DESK COMPULITE!!!

DESK 48 CH 2 PRESET + MEMORY PRESET(MA 48)

Please check the plot on the last page of this rider

##### **Backline:**

.-

##### **Mikes:**

*Trumpet and Flügelhorn): 2 lines with XLR cables – (Fresu uses his personal clip mike)*

*1 good mike for percussion on short boom*

*2 SHURE SM 58 on normal mike stand*

##### **STAGE:**

*A possibly classic black stage/scene, linear, clean set up with three basic different stage positions. The main one is centered on stage, slowly moved to the main exit stage.*

*A sufficient number of mike stands, 1 chair without arms and one little table [50 cm high] for Fresu and his effects rack to put on the right position of the musician]*

##### **EXTREMELY IMPORTANT /SOUNDCHECK**

*Artist will make effort to complete all these requirements at least two hours prior to concert start time.*

*Prev. soundcheck time: not more than 60 minutes.*

*It is utmost importance that sound, light and stage base is set up and running without problems, well in advance of the artist' arrival to the venue.*

*Artists prefer to have dinner right after the sound check and anyway before the concert*

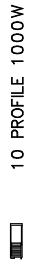
##### **NOTES:**

*It prefers to have dinner, right after the sound check. This one must be fixed possibly 3 hours before the concert and it shouldn't take more than 60 minutes.*

*The restrooms have to be supplied with a set of towels and some snacks, soft drinks, beers, red wine and fresh fruits.*

***Questo rider è parte integrante del contratto / This rider is necessarily a strictly contractual part***

LEGENDA



10 PROFILE 1000W



5 ETC ZOOM 750W  
+ SUPPORT GOBO



15 DOMINO 1000W



10 PC 1000W



3 PAR LED  
LINEAR DIMMER 0-100%



5 PAR 36 86



1 HAZE MACHINE



1 FOLLOW SPOT



2 LINES DIMMER  
(BLACK CABLE)



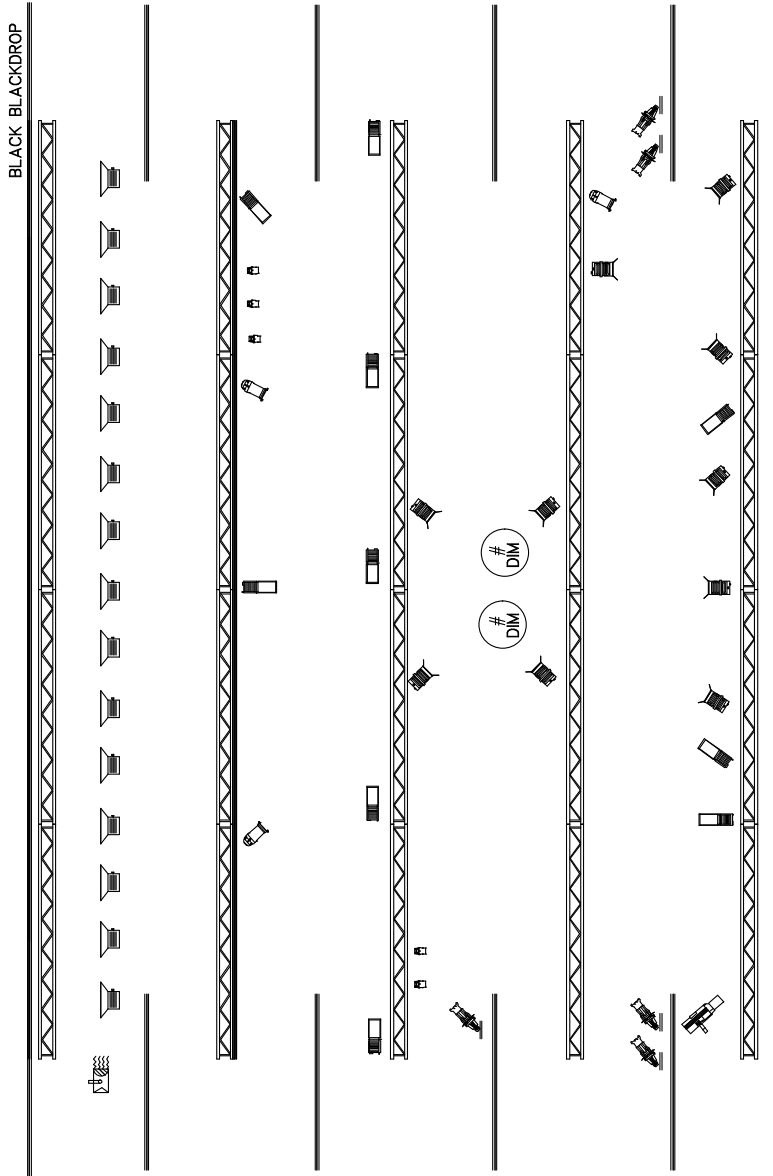
5 GROUND SUPPORT

FILTERS

5 FILTERS N.106

6 FILTERS N.181

4 FILTERS N.251  
FROST



LIGHTING DESIGN: FRANCESCO CARTA

Titolo: LIGHTS PLOT: PAOLO PRESU SOLO  
Disegno n° Autore:  
Data: 05/05/15 Foglio di



## **HOSPITALITY RIDER**

### **HOTEL**

Please provide 4 or 5 star hotel accommodation incl. continental breakfast at no cost to the artist. Large rooms are required with "king size" beds or - in alternative - double rooms for each artist.

### **GROUND TRANSPORT**

Please provide comfortable vans with driver for transporting during the residence. The artists bring luggage and instruments with.

### **DRESSING ROOMS**

Dressing room shall be located in backstage area, lockable and keys given to artists or – if present – to artist's repr. upon arrival. Remember that the promoter is responsible for the security and all valuables in the backstage area. The dressing rooms need to be clean, furnished and contain chairs, tables, mirrors, toilets, soap and towels.

### **CATERING**

Coffee, soft drinks, fruit juices, mineral water (gas and no gas), red wine, beer, sandwiches, fruits must be available during the sound check and after the concert

### **DINNER**

Please provide a hot dinner for 4/5 persons (meat or fish are accepted anyway) USUALLY BEFORE THE CONCERT right after the sound check.

## **LIGHT RIDER**

**If it is not technically possible to create the lighting board indicated above, the following request must be guaranteed at the minimum.**

### **Light Plot**

The production travels with the lighting operator (Luca Devito +39 349 61 59 463) in tow. Please provide for him a Chamsys console (NO QUICK SERIES) or MA2 or MA3 which will possibly be positioned next to the audio, and an assistant who takes care of aiming and possesses excellent technical knowledge; if this is not possible, we invite you to promptly notify us.

The lighting plan can adapt to the conditions of the venue and any alternatives that adapt to what is indicated are welcome, but each aspect must be agreed in advance and approved by the production.

For each musician, provide reading lights independent of the lectern, dimmable and controllable by the light provider, who will have to manage the entire lighting of the room.

Furthermore, it is necessary to receive the list of fixtures available for the show in advance in order to be able to preset the work.

Front Truss: 1/2 profiler 25°/50° for each of the musicians on stage + 4 pc 1kw with flags

Middle Truss: 1 rain shaper 25°/50° for each of the musicians on stage + 2 Spots as pipe hand

Rear Truss: 6 WashBeam + 3 Spots – the latter will be placed at the respective ends of the same as a pipe hand and in the center.

Backdrop: 6/8 ParLeds on the floor and along the entire surface of the backdrop, which must be black

Hazers: 2